



8/01/24

**ADDENDUM NUMBER 2
FOR
SCAPPOOSE BAY MARINE PARK
MARINA IMPROVEMENTS PROJECT PHASE 1**

This addendum forms a part of the Contract Documents and modifies the original Bidding Documents dated **July 12, 2024** and any previously issued addenda as noted below. Acknowledge receipt of this Addendum in the space provided on the Bid Form. Failure to do so may subject the Bidder to disqualification.

ITEM I - PROJECT MANUAL

SECTION 01 22 50 – MEASUREMENT AND PAYMENT:

1. Section has been modified with changes noted in **red**. See attached section 01 22 50 which replaces the previous version.

ITEM II – DRAWINGS

- Reissue sheet C1.0 – Demolition Plan – Upland South in its entirety with revisions clouded.
- Reissue sheet C3.0 – Upland Site Plan in its entirety with revisions clouded.
- Reissue sheet C3.1 – Upland Site Plan in its entirety with revisions clouded.
- Reissue sheet C5.0 – Upland Utility Plan in its entirety with revisions clouded.
- Reissue sheet C8.1 – Details in its entirety with revisions clouded.
- Reissue sheet S5.1 – Typical Concrete Details 2 in its entirety with revisions clouded.

ITEM III - ADDITIONAL INFORMATION FOR BIDDERS

- Bid Sheet has been updated.
- Additional questions that were received have been responded to and added to the list previously issued.

ITEM IV – ATTACHMENTS

1. Replacement Section 01 22 50 – Measurement and Payment.
2. Revised Bid Sheet.
3. Drawings: C1.0
C3.0
C3.1
C5.1
C8.1
S5.1
4. Questions and answers received.

END OF ADDENDUM NUMBER 2



SCAPPOSE BAY MARINA IMPROVEMENTS PROJECT
PHASE 1

SECTION 01 22 50 – MEASUREMENT AND PAYMENT

PART 1 - GENERAL

1.1 DESCRIPTION

- A. All Payments shall be as provided in the State of Oregon Standard Conditions for Public Improvement Contracts. References to other documents in the Drawings and in the Technical Specifications, such as ODOT are not intended to include references to measurement and payment that may exist in those other documents. Specific Measurements for Payment are detailed in this specification Section 012250.
- B. If no Bid Item exists for a portion of the work, include the costs in a related Bid Item.
- C. No separate payment will be made for any item that is not specifically set forth in the Proposal Schedule, and all costs therefore shall be included in the prices named in the Proposal Schedule for the various appurtenant items of work.
- D. Quantities listed in the Proposal do not govern final payment. Payments to the Contractor will be made only for actual quantities of Contract items performed in accordance with the terms of the Contract and for items of work actually performed under Change Orders.
- E. Indirect costs, such as supervision and overhead, profit, and the general conditions specified in the Contract, all shall be allocated to each bid item as applicable for work defined in the bid item. No separate payment will be made to the Contractor for these items.

1.2 BID ITEM MEASUREMENT AND PAYMENT

- A. BID ITEMS:
 - 1. Mobilization: Payment for Mobilization shall be made on a lump sum basis. The amount to be allowed for Mobilization in the partial payment to be made under the Contract will be as follows:
 - a) When 5% of the total original contract amount is earned from other bid items, not including advances on materials, 50% of the amount bid for Mobilization, or 2.5% of the original contract amount, whichever is the least, less normal retainage, will be paid.
 - b) When 10% of the total original contract amount is earned from other bid items, not including advances on materials, 100% of the amount bid for Mobilization, or 5% of the original contract amount, whichever is the least, less normal retainage, will be paid.
 - c) Upon completion of all work on the project, payment of any amount bid for Mobilization in excess of 5% of the total original contract amount will be paid.
 - d) The above schedule of progress payments for Mobilization shall not limit or preclude progress payments otherwise provided by the Contract.
 - 2. Temporary Traffic Control
 - a. Measurement for Temporary Traffic Control shall be made on a lump sum basis.

SCAPPOSE BAY MARINA IMPROVEMENTS PROJECT
PHASE 1

- b) Payment shall include full compensation for all materials, tools, equipment, and labor necessary for the installation and maintenance of temporary traffic control measures in accordance with the requirements of the Contract Documents.
- 3. Erosion Control:
 - a) Measurement for Erosion Control shall be made on a lump sum basis.
 - b) Payment shall include full compensation for all materials, tools, equipment, and labor necessary for the installation and maintenance of erosion control measures and all other related Work in accordance with the requirements of the Contract Documents and as shown on the Drawings.
- 4. Removal of Existing Structures and Obstructions:
 - a) Measurement for Removal of Existing Structures and Obstructions shall be made on a lump sum basis for all material removed as shown on the Drawings.
 - b) Payment shall include full compensation for all labor, materials, tools, and equipment necessary for the removal of all structures, hauling and legal disposal of excess material off-site, and all other related Work in accordance with the requirements of the Contract Documents and as shown on the Drawings.
- 5. Clearing and Grubbing
 - a) Measurement for Clearing and Grubbing shall be made on a lump sum basis.
 - b) Payment shall include full compensation for all labor, materials, tools, and equipment necessary for clearing and grubbing and all other related Work in accordance with the requirements of the Contract Documents and as shown on the Drawings.
- 6. General Excavation
 - a) Measurement for General Excavation shall be made on a neat line, in place cubic yard basis for all material removed and disposed of as shown on the Drawings.
 - b) Payment shall include full compensation for all labor, materials, tools, and all other related Work in accordance with the requirements of the Contract Documents and as shown on the Drawings.
- 7. 8-Inch Pipe, PVC ASTM D3034 SDR 35, Bedding Type D
 - a) Measurement for 8-Inch Pipe, PVC ASTM D3034 SDR 35, Bedding Type D shall be made on a lineal foot installed basis, as specified in the Bid Schedule and shown on the Drawings.
 - b) Payment shall include full compensation for all labor, materials, tools, and equipment necessary for the furnishing, transportation, and installation of the 8-inch Pipe, PVC ASTM D3034 SDR 35, Bedding Type D including fittings, trench excavation, pipe zone material, backfill, dewatering, and tracer wire in conformance with Contract Documents.
- 8. Stormfilter Catch Basin
 - a) Measurement for Stormfilter Catch Basin shall be made for each material furnished and installed as shown on the Drawings and in accordance with manufacturer's recommendations.
 - b) Payment shall include full compensation for all labor, materials, tools, and equipment necessary for the installation of Stormfilter Catch Basin and all other related Work in accordance with the requirements of the Contract Documents, manufacturer's recommendations, and as shown on the Drawings.
- 9. Retaining Wall (<6-Foot High)
 - a) Measurement for Retaining Wall (<6-Foot High) shall be made on a square foot in-place basis from the top of the wall to the top of the foundation for all material furnished and installed as shown on the Drawings.
 - b) Payment shall include full compensation for all labor, materials, tools, and equipment necessary for the installation of the Retaining Wall (<6-Foot High), footing excavation, footing installation, and all other related Work in accordance with the

SCAPPOSE BAY MARINA IMPROVEMENTS PROJECT
PHASE 1

requirements of the Contract Documents and as shown on the Drawings.

10. Pedestrian Guardrail
 - a) Measurement for Pedestrian Guardrail shall be made on a lineal foot installed basis for all material furnished and installed as shown on the Drawings.
 - b) Payment shall include full compensation for all labor, materials, tools, and equipment necessary for the installation of the Pedestrian Guardrail and all other related Work in accordance with the requirements of the Contract Documents and as shown on the Drawings.
11. Bollards
 - a) Measurement for Bollards shall be made for each material furnished and installed as shown on the Drawings.
 - b) Payment shall include full compensation for all labor, materials, tools, and equipment necessary for the installation of the Bollards, footing excavation, footing installation, and all other related Work in accordance with the requirements of the Contract Documents and as shown on the Drawings.
12. Saw Cutting
 - a) Measurement for Saw Cutting shall be made on a lineal foot installed basis for all material furnished and installed as shown on the Drawings.
 - b) Payment shall include full compensation for all labor, materials, tools, and equipment necessary for the installation of Saw Cutting and all other related Work in accordance with the requirements of the Contract Documents and as shown on the Drawings.
13. Aggregate Base, ~~8-inch Thick~~
 - a) Measurement for Aggregate Base, ~~8-inch Thick~~ shall be made on a ton basis for all material furnished and installed as shown on the Drawings.
 - b) Payment shall include full compensation for all labor, materials, tools, and equipment necessary for the installation of Aggregate Base, ~~8-inch Thick~~ and all other related Work in accordance with the requirements of the Contract Documents and as shown on the Drawings.
14. Level 2, 1/2-Inch Dense, MWMAC Mixture
 - a) Measurement for Level 2, 1/2-Inch Dense, MWMAC Mixture shall be made on a ton basis for all material furnished and installed as shown on the Drawings.
 - b) Payment shall include full compensation for all labor, materials, tools, and equipment necessary for the installation of Level 2, 1/2-Inch Dense, MWMAC Mixture and all other related Work in accordance with the requirements of the Contract Documents and as shown on the Drawings.
15. Subgrade Geotextile
 - a) Measurement for Subgrade Geotextile shall be made on a square yard in-place basis for all material furnished and installed as shown on the Drawings.

Payment shall include full compensation for all labor, materials, tools, and equipment necessary for the installation of Subgrade Geotextile and all other related Work in accordance with the requirements of the Contract Documents and as shown on the Drawings.
16. Concrete Curb Wall
 - a) Measurement for Concrete Curb Wall shall be made on a lineal foot installed basis for all material furnished and installed as shown on the Drawings.
 - b) Payment shall include full compensation for all labor, materials, tools, and equipment necessary for the installation of the Concrete Curb Wall and all other related Work in accordance with the requirements of the Contract Documents and as shown on the Drawings.
17. Concrete Curbs Standard
 - a) Measurement for Concrete Curbs shall be made on a lineal foot installed basis for all

SCAPPOSE BAY MARINA IMPROVEMENTS PROJECT
PHASE 1

- material furnished and installed as shown on the Drawings.
- b) Payment shall include full compensation for all labor, materials, tools, and equipment necessary for the installation of Concrete Curbs and all other related Work in accordance with the requirements of the Contract Documents and as shown on the Drawings.
18. Concrete Sidewalk
- a) Measurement for Concrete Sidewalk shall be made on a square foot in-place basis for all material furnished and installed as shown on the Drawings.
 - b) Payment shall include full compensation for all labor, materials, tools, and equipment necessary for the installation of Concrete Sidewalk and all other related Work in accordance with the requirements of the Contract Documents and as shown on the Drawings.
19. Concrete Pavement
- a) Measurement for Concrete Walkway shall be made on a square foot in-place basis for all material furnished and installed as shown on the Drawings.
 - b) Payment shall include full compensation for all labor, materials, tools, and equipment necessary for the installation of Concrete Walkway and all other related Work in accordance with the requirements of the Contract Documents and as shown on the Drawings.
20. Vehicular Concrete
- a) Measurement for Vehicular Concrete shall be made on a square foot in-place basis for all material furnished and installed as shown on the Drawings.
 - b) Payment shall include full compensation for all labor, materials, tools, and equipment necessary for the installation of Vehicular Concrete and all other related Work in accordance with the requirements of the Contract Documents and as shown on the Drawings.
21. Curb Ramp
- a) Measurement for Curb Ramp shall be made per each material furnished and installed as shown on the Drawings.
 - b) Payment shall include full compensation for all labor, materials, tools, and equipment necessary for the installation of Curb Ramp and all other related Work in accordance with the requirements of the Contract Documents and as shown on the Drawings.
22. Stripe Removal
- a) Measurement for Stripe Removal shall be made on a lump sum basis for all material furnished and installed as shown on the Drawings.
 - b) Payment shall include full compensation for all labor, materials, tools, and equipment necessary for the installation of Stripe Removal and all other related Work in accordance with the requirements of the Contract Documents and as shown on the Drawings.
23. Parking Striping
- a) Measurement for Parking Striping shall be made on a lineal foot installed basis for all material furnished and installed as shown on the Drawings.
 - b) Payment shall include full compensation for all labor, materials, tools, and equipment necessary for the installation of Parking Striping and all other related Work in accordance with the requirements of the Contract Documents and as shown on the Drawings.
24. Seeding
- a) Measurement for Seeding shall be made on a square yard installed basis for all material furnished and installed as shown on the Drawings.
 - b) Payment shall include full compensation for all labor, materials, tools, and equipment

SCAPPOSE BAY MARINA IMPROVEMENTS PROJECT
PHASE 1

necessary for the installation of Seeding and all other related Work in accordance with the requirements of the Contract Documents and as shown on the Drawings.

25. Topsoil
 - a) Measurement for Topsoil shall be made on a neat line, in place cubic yard basis for all material furnished and installed as shown on the Drawings.
 - b) Payment shall include full compensation for all labor, materials, tools, and equipment necessary for the installation of Topsoil and all other related Work in accordance with the requirements of the Contract Documents and as shown on the Drawings.
26. New Pay Station
 - a) Measurement for New Pay Station shall be made for each material furnished and installed as shown on the Drawings.
 - b) Payment shall include full compensation for all labor, materials, tools, and equipment necessary for the installation of New OFCI Pay Station and OFCI pay station structure and all other related Work in accordance with the requirements of the Contract Documents and as shown on the Drawings.
27. Readjust Existing Pay Station
 - a) Measurement for Readjust Existing Pay Station shall be made for each material furnished and installed as shown on the Drawings.
 - b) Payment shall include full compensation for all labor, materials, tools, and equipment necessary to Readjust Existing Pay Station, installation of OFCI structure and all other related Work in accordance with the requirements of the Contract Documents and as shown on the Drawings.
28. Electrical Service, Complete:
 - a) Measurement shall be made on a lump sum basis installed.
 - b) Payment shall include full compensation for all materials, equipment, and labor to complete the installation of power service to the site as shown on the plans, including but not limited to utility vaults, Kellem's grip, primary feeders, transformer, and meter. Coordination with the PUD and PUD fees are incidental to this bid item.
29. Water Service, Complete:
 - a) Measurement shall be made on a lump sum basis installed.
 - b) Payment shall include full compensation for all materials, equipment, and labor to complete the installation of water service to the site as shown on the plans, including but not limited to the installation of the OFCI fire hydrant, fire department connections, and backflow preventors.
30. Sign Installation
 - a) Measurement for Sign Installation shall be made on a lump sum basis for all material furnished and installed as shown on the Drawings.
 - b) Payment shall include full compensation for all labor, materials, tools, and equipment necessary for Sign Installation including foundation excavation, footing installation, and all other related Work in accordance with the requirements of the Contract Documents and as shown on the Drawings.
31. Precast Concrete Wheel Stop
 - a) Measurement for Precast Concrete Wheel Stop shall be made for each material furnished and installed as shown on the Drawings.
 - b) Payment shall include full compensation for all labor, materials, tools, and equipment necessary for the installation of Precast Concrete Wheel Stop and all other related Work in accordance with the requirements of the Contract Documents and as shown on the Drawings.
32. Reinstall Flagpole
 - a) Measurement for Reinstall Flagpole shall be made on a lump sum basis for all material furnished and installed as shown on the Drawings.

SCAPPOSE BAY MARINA IMPROVEMENTS PROJECT
PHASE 1

- b) Payment shall include full compensation for all labor, materials, tools, and equipment necessary for the reinstallation of flagpole, installation of new footing, and all other related Work in accordance with the requirements of the Contract Documents and as shown on the Drawings.

PART 2 - PART 2 – MATERIALS (not applicable)

PART 3 - PART 3 – EXECUTION (not applicable)

END OF SECTION 012250

PROPOSAL – PRICE SCHEDULE – BID SHEET

	Line Items	Quantity	Unit	Unit Cost	Total Cost
A1	Mobilization	1	LS		
A2	Temporary Traffic Control	1	LS		
A3	Erosion Control	1	LS		
A4	Removal of Existing Structures and Obstructions	1	LS		
A5	Clearing and Grubbing	1	LS		
A6	General Excavation	450	CY		\$
A7	8-inch Pipe, PVC ASTM D3034 SDR 35, Bedding Type D	10	LF		\$
A8	Storm Filter Catch Basin	1	EA		\$
A9	Retaining Wall (<6-feet high)	350	SF		\$
A10	Pedestrian Guardrail	70	LF		\$
A11	Bollards	4	EA		\$
A12	Saw Cutting	620	LF		\$
A13	Aggregate base	460	TON		\$
A14	Level 2, 1/2-Inch Dense, MWMAC Mixture	280	TON		\$
A15	Subgrade Geotextile	800	SY		\$
A16	Concrete Curb Wall	255	LF		\$
A17	Concrete Curbs Standard	610	LF		\$
A18	Concrete Sidewalk	4540	SF		\$
A19	Concrete Pavement	150	SF		\$
A20	Vehicular Concrete	160	SF		\$
A21	Curb Ramp	3	EA		\$
A22	Stripe Removal	1	LS		\$
A23	Parking Striping	2150	LF		\$
A24	Seeding	180	SY		\$
A25	Topsoil	20	CY		\$
A26	New Pay Station	1	EA		\$
A27	Readjust Existing Pay Station	1	EA		\$
A28	Electrical Service, Complete	1	LS		\$
A29	Water Service, Complete	1	LS		\$
A30	Sign Installation	1	LS		\$
A31	Recast Concrete Wheel Stop	2	EA		\$
A32	Reinstall Flagpole	1	LS		\$
TOTAL BID (Lines A1-A32)					\$

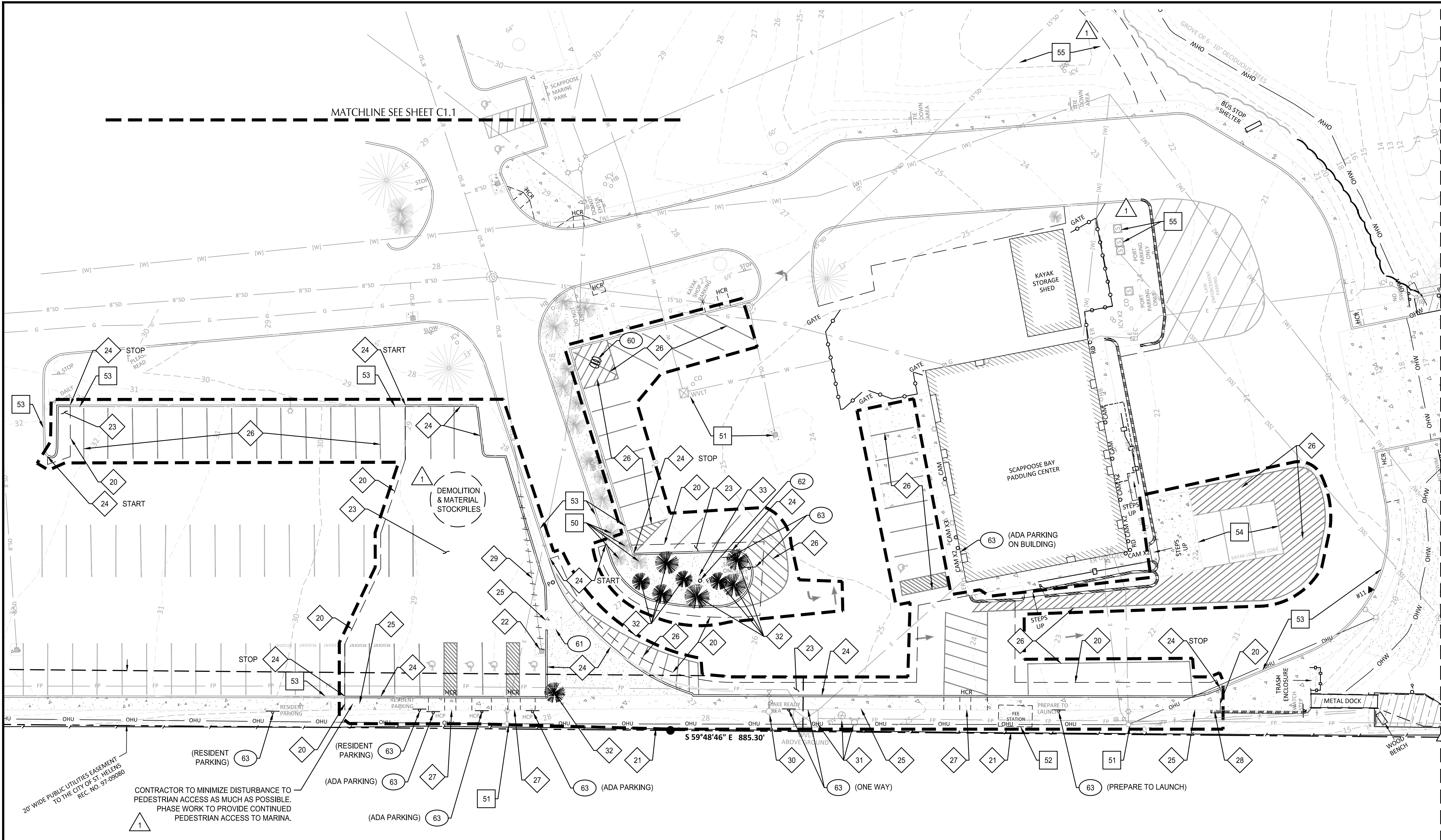
By (Bidder Name)

Date

By signing this Bid, Bidder certifies, acknowledges, understands and agrees to be bound by the unit pricing as submitted, as well as all terms, conditions and provisions set forth in this solicitation.

File: N:\c\2020\2000399-scappoose-bay-marine-imprmts\CAD\Plot\PHASE-1\0399-C1.0-DEM.DWG TAB C1.0
Plotted: 8/12/24 at 3:25pm By: hJames

22x34



SHEET NOTES

1. THE CONTRACTOR SHALL BE RESPONSIBLE FOR DEMOLITION AND DISPOSAL OF EXISTING AC, CURBS, SIDEWALKS AND OTHER SITE ELEMENTS WITHIN THE SITE AREA IDENTIFIED IN THE PLANS.
2. EXCEPT FOR MATERIALS INDICATED TO BE STOCKPILED OR TO REMAIN ON OWNER'S PROPERTY, CLEARED MATERIALS SHALL BECOME CONTRACTOR'S PROPERTY, REMOVED FROM THE SITE, AND DISPOSED OF PROPERLY.
3. ITEMS INDICATED TO BE SALVAGED SHALL BE CAREFULLY REMOVED, DELIVERED AND STORED AT THE PROJECT SITE AS DIRECTED BY THE OWNER.
4. ALL LANDSCAPING, PAVEMENT, CURBS AND SIDEWALKS, BEYOND THE IDENTIFIED SITE AREA, DAMAGED DURING THE CONSTRUCTION SHALL BE REPLACED TO THEIR ORIGINAL CONDITION OR BETTER.
5. CONCRETE SIDEWALKS SHOWN FOR DEMOLITION SHALL BE REMOVED TO THE NEAREST EXISTING CONSTRUCTION JOINT.
6. SAWCUT STRAIGHT MATCHLINES TO CREATE A BUTT JOINT BETWEEN THE EXISTING AND NEW PAVEMENT.

DEMOLITION KEY NOTES

- 20 SAWCUT EXISTING PAVEMENT
- 21 REMOVE FENCE
- 22 REMOVE CATCH BASIN
- 23 REMOVE ASPHALT PAVEMENT AND CRUSHED ROCK SUBGRADE.
- 24 REMOVE CURB
- 25 REMOVE SIDEWALK
- 26 REMOVE STRIPING, SEE SPECIFICATIONS FOR MORE INFORMATION
- 27 REMOVE CONCRETE RAMP
- 28 REMOVE 3' LONG SECTION OF RETAINING WALL TO ACCOMMODATE CONSTRUCTION.
- 29 REMOVE 8" STORM LINE
- 30 REMOVE EXISTING FIRE HYDRANT, FIRE LATERAL, AND GATE VALVE. CONTRACTOR TO COORDINATE WITH OWNER DURING CONSTRUCTION TO PROVIDE FIRE PROTECTION DURING CONSTRUCTION WHILE HYDRANT AND FDC ARE UNAVAILABLE.
- 31 REMOVE AND RELOCATE EXISTING FIRE WATER BACKFLOW VAULT, PIV, AND FDC, SEE SHEET C5.0
- 32 REMOVE BUSH/SHRUB
- 33 REMOVE FLAG POLE FOUNDATION

PROTECTION KEY NOTES

- 50 PROTECT TREE / BUSH
- 51 PROTECT EXISTING UTILITY
- 52 PROTECT EXISTING FEE STATION. UNBOLT AND TEMPORARY RELOCATE EXISTING STRUCTURE AS NEEDED TO COMPLETE CONSTRUCTION.
- 53 PROTECT EXISTING CURB
- 54 PROTECT EXISTING PARKING LOADING ZONE STRIPING
- 55 PROTECT EXISTING SEPTIC TANKS AND DRAIN FIELD.

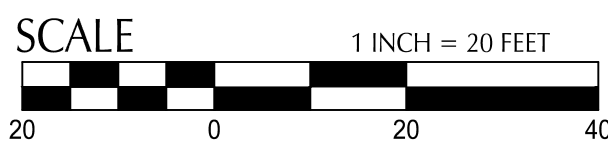
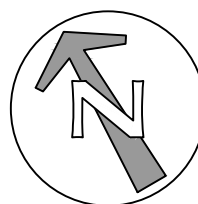
SALVAGE KEY NOTES

- 60 SALVAGE EXISTING BIKE RACK TO PORT
- 61 SALVAGE EXISTING DUMPSTER TO PORT
- 62 REMOVE AND SALVAGE FLAG POLE FOR REINSTALLATION, SEE C3.0
- 63 SALVAGE EXISTING SIGN TO PORT

SHEET LEGEND

- PROPERTY LINE
- OHW --- ORDINARY HIGH WATER
- DEMOLITION/WORK LIMITS (SHOWN OFFSET FOR CLARITY)
- SAWCUT LINE
- REMOVE OR ABANDON UTILITY LINE IN PLACE

REVISION	DATE	DESCRIPTION	BY
3	7/30/2024	BID ADDENDUM 2	
2	7/11/2024	BID SET	
1	7/09/2024	CITY OF SCAPPOOSE - FINAL PLAN REVIEW COMMENTS	



kpff

111 SW Fifth Ave., Suite 2600
Portland, OR 97204
O: 503.542.3860
F: 503.274.4681
www.kpff.com



JOB No.: 2000399
DESIGNED BY: IF
DRAWN BY: CK
CHECKED BY: JZ
PLOT DATE: 8/1/24 3:25pm
PLOTTED BY: hJames
DWG NAME: 0399-C1.0-DEM.DWG
TAB NAME: C1.0

57420 OLD PORTLAND ROAD, COLUMBIA COUNTY, OREGON 97053

SCAPPOOSE BAY MARINE PARK
MARINA IMPROVEMENTS PROJECT UPLAND PHASE 1

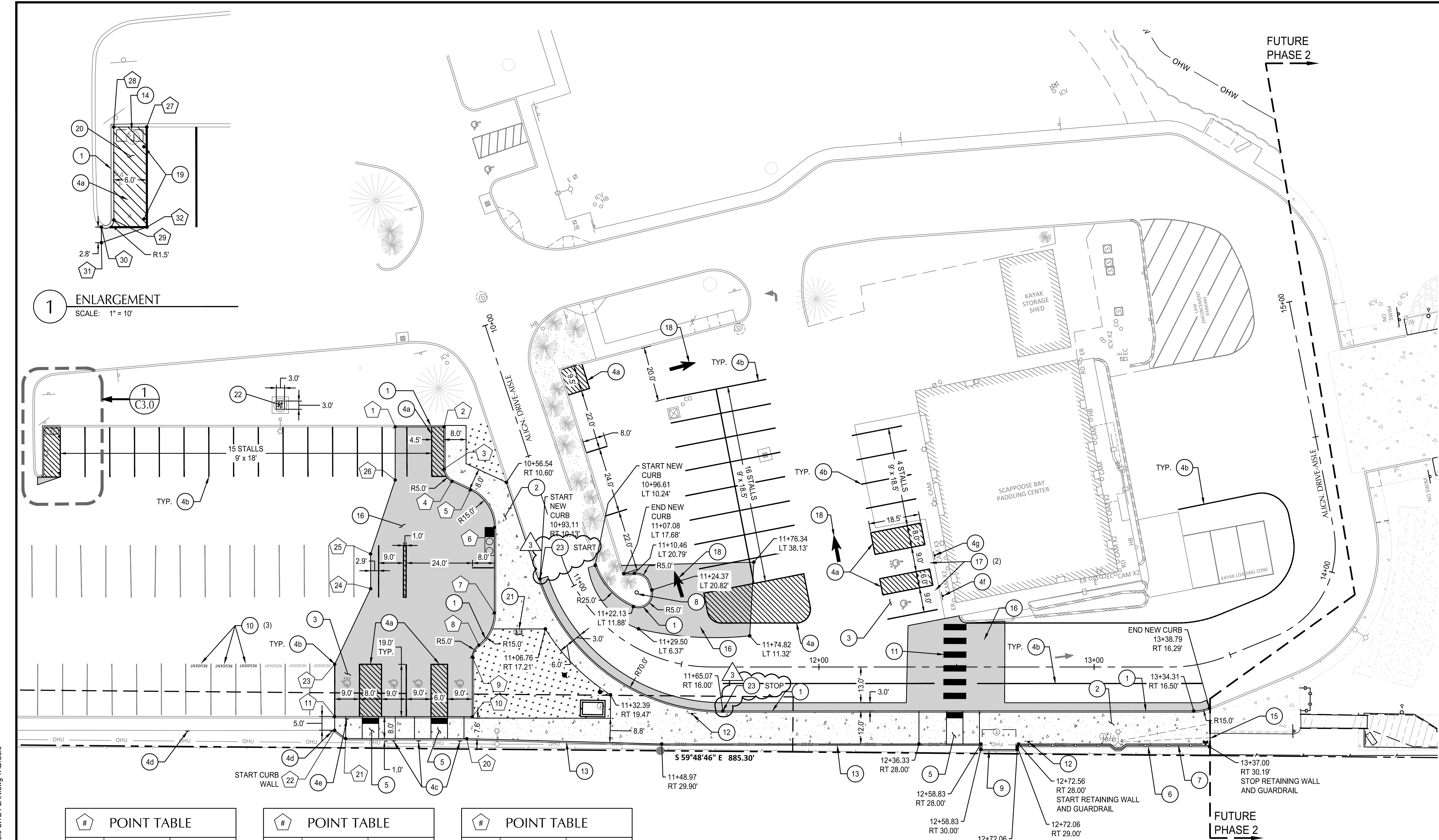
DEMOLITION PLAN - UPLAND SOUTH

SHEET NO.

C1.0

SHEET 4 OF 23
RECORD NO.
2000399

File: N:\c3\2020\0399-scappoose-bay-marine-imprmts\CAD\PILOT\PHASE-1\0399-C3.0-SITE PLAN.dwg TAB C3.0
Plotted: 8/1/24 at 10:06am By: tjames



1 ENLARGEMENT
SCALE: 1" = 10'

#	POINT TABLE	
ID	NORTHING	EASTING
1	283739.67	305387.83
2	283730.92	305403.25
3	283717.62	305395.70
4	283712.25	305395.98
5	283706.22	305400.27
6	283690.09	305401.07
7	283663.09	305385.66
8	283655.71	305374.96
9	283653.15	305370.77
10	283634.28	305360.00

#	POINT TABLE	
ID	NORTHING	EASTING
11	283659.10	305316.59
20	283628.33	305354.29
21	283650.17	305316.09
22	283654.76	305314.11
23	283675.60	305326.01
24	283692.99	305350.95
25	283704.01	305357.19
26	283722.92	305378.27
27	283799.95	305282.03
28	283802.93	305276.82

#	POINT TABLE	
ID	NORTHING	EASTING
29	283788.23	305268.48
30	283788.23	305265.87
31	283785.77	305264.47
32	283784.13	305273.05

SHEET NOTES

- ALL DIMENSIONS ARE TO FACE OF CURB OR FACE OF WALL.
- ALL SIDEWALK PAVEMENT JOINTS SHALL BE CONSTRUCTED PER DETAIL 10/C8.0

KEY NOTES

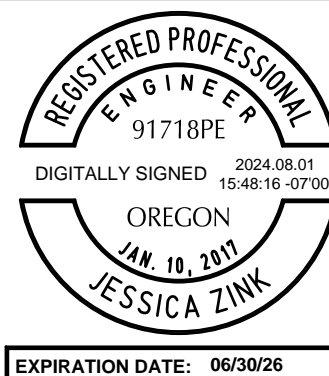
- | # | DESCRIPTION | DETAIL REF. |
|----|--|-------------|
| 1 | CONSTRUCT STANDARD CURB | 1/C8.0 |
| 2 | CONSTRUCT CONCRETE SIDEWALK | 2/C8.0 |
| 3 | INSTALL ADA PARKING STALLS AND STRIPING | 3/C8.0 |
| 4a | INSTALL "NO PARKING" ZONE STRIPING | 3/C8.0 |
| 4b | INSTALL 4" WIDE WHITE STRIPE | |
| 4c | INSTALL SALVAGED ADA PARKING SIGN - POLE MOUNTED | 4/C8.0 |
| 4d | INSTALL SALVAGED RESIDENTIAL PARKING SIGN | |
| 4e | INSTALL ADA VAN PARKING SIGN - POLE MOUNTED | |
| 4f | INSTALL SALVAGED ADA PARKING SIGN - WALL MOUNTED | |
| 4g | INSTALL ADA VAN PARKING SIGN - WALL MOUNTED | |
| 5 | CONSTRUCT CURB RAMP, SEE GRADING ENLARGEMENT ON C4.0 | 8/C8.0 |
| 6 | CONSTRUCT RETAINING WALL | 1/S5.1 |
| 7 | INSTALL PEDESTRIAN GUARDRAIL | 2/S5.1 |
| 8 | REINSTALL FLAG POLE WITH NEW FOOTING. | 3/S5.1 |
| 9 | REINSTALL PAY STATION WOODEN STRUCTURE. ALIGN WOODEN STRUCTURE WITH BACK OF CURB WALL. | |
| 10 | INSTALL "RESIDENT" STENCILED LETTERS COORDINATE WITH THE PORT FOR LOCATION AND COLOR | |
| 11 | INSTALL CROSSWALK STRIPING | 6/C8.0 |
| 12 | REINSTALL SIGN | |
| 13 | CONSTRUCT CURB WALL | 7/C8.1 |
| 14 | INSTALL NEW O.F.C.I. PAY STATION IN ACCORDANCE WITH ALL MANUFACTURER RECOMMENDATIONS. CONTRACTOR SHALL INSTALL O.F.C.I. PAY STATION STRUCTURE. | |
| 15 | INSTALL TEMPORARY WOODEN FENCE TO BLOCK PEDESTRIAN ACCESS. | |
| 16 | CONSTRUCT STANDARD ASPHALT PAVEMENT | 7/C8.0 |
| 17 | INSTALL PRECAST CONCRETE WHEEL STOP | 5/C8.0 |
| 18 | INSTALL DIRECTIONAL ARROW | 11/C8.0 |
| 19 | INSTALL BOLLARD | 2/C8.2 |
| 20 | CONSTRUCT CONCRETE PAVING | 3/C8.2 |
| 21 | CONSTRUCT CONCRETE PAD FOR FUTURE AIR COMPRESSOR | |
| 22 | CONSTRUCT CONCRETE PAD FOR ELECTRICAL METER MOUNT | 3/C8.2 |
| 23 | PAINT CURB RED AND MARK "NO PARKING FIRE LANE" AT 25 FOOT INTERVALS PER CRFR GUIDELINES. | |

SHEET LEGEND

	PROPERTY LINE
	ORDINARY HIGH WATER
	SAWCUT LINE
	GUARDRAIL
	CONCRETE SIDEWALK
	STANDARD ASPHALT PAVEMENT
	LANDSCAPING

kpff

111 SW Fifth Ave., Suite 2600
Portland, OR 97204
O: 503.542.3860
F: 503.274.4681
www.kpff.com



JOB No.: 2000399
DESIGNED BY: IF
DRAWN BY: CK
CHECKED BY: JZ
PLOT DATE: 8/1/24 10:06am
PLOTTED BY: hjames
DWG NAME: 0399-C3.0 SITE PLAN.dwg
TAB NAME: C3.0

57420 OLD PORTLAND ROAD, COLUMBIA COUNTY, OREGON 97053

SCAPPOOSE BAY MARINE PARK
MARINA IMPROVEMENTS PROJECT UPLAND PHASE 1

UPLAND SITE PLAN

SHEET NO.

C3.0

SHEET 7 OF 23
RECORD NO. 2000399

File: N:\proj\2020\000399-scappoose-bay-marine-imprmts\CAD\PILOT\PHASE-1\0399-C3.0-SITE PLAN.dwg TAB C3.1
Plotted: 8/1/24 at 10:06am By: tjames
22x34

1 NOT USED
SCALE: 1" = 10'



2 ENLARGEMENT - TRASH AREA
SCALE: 1" = 10'



SHEET NOTES

- ALL DIMENSIONS ARE TO FACE OF CURB OR FACE OF WALL.
- ALL SIDEWALK PAVEMENT JOINTS SHALL BE CONSTRUCTED PER DETAIL 10/C8.0

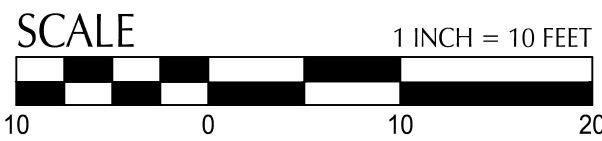
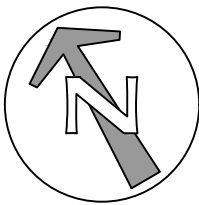
KEY NOTES

#	DESCRIPTION	DETAIL REF.
1	INSTALL STANDARD CURB	1/C8.0
14	NOT USED	
16	INSTALL STANDARD ASPHALT PAVEMENT	7/C8.0
19	NOT USED	
20	NOT USED	
21	INSTALL VEHICULAR CONCRETE	4/C8.2
24	INSTALL 6 FT HIGH CHAIN LINK FENCE WITH PRIVACY SLATS. CONTRACTOR TO PROVIDE PRODUCT SUBMITTAL FOR APPROVAL BY OWNER.	
25	INSTALL 3' GATE DOOR	
26	INSTALL 8' VEHICLE GATE	

SHEET LEGEND

	PROPERTY LINE
	SAWCUT LINE
	CHAIN LINK FENCE
	CONCRETE SIDEWALK
	STANDARD ASPHALT PAVEMENT
	VEHICULAR CONCRETE

REVISION	DATE	DESCRIPTION	BY
3	7/30/2024	BID ADDENDUM 2	
2	7/11/2024	BID SET	
1	7/09/2024	CITY OF SCAPPOOSE - FINAL PLAN REVIEW COMMENTS	



kpff

111 SW Fifth Ave., Suite 2600
Portland, OR 97204
O: 503.542.3860
F: 503.274.4681
www.kpff.com



JOB No.:	2000399
DESIGNED BY:	IF
DRAWN BY:	CK
CHECKED BY:	JZ
PLOT DATE:	8/1/24 10:06am
PLOTTED BY:	hjames
DWG NAME:	0399-C3.0-SITE PLAN.dwg
TAB NAME:	C3.1

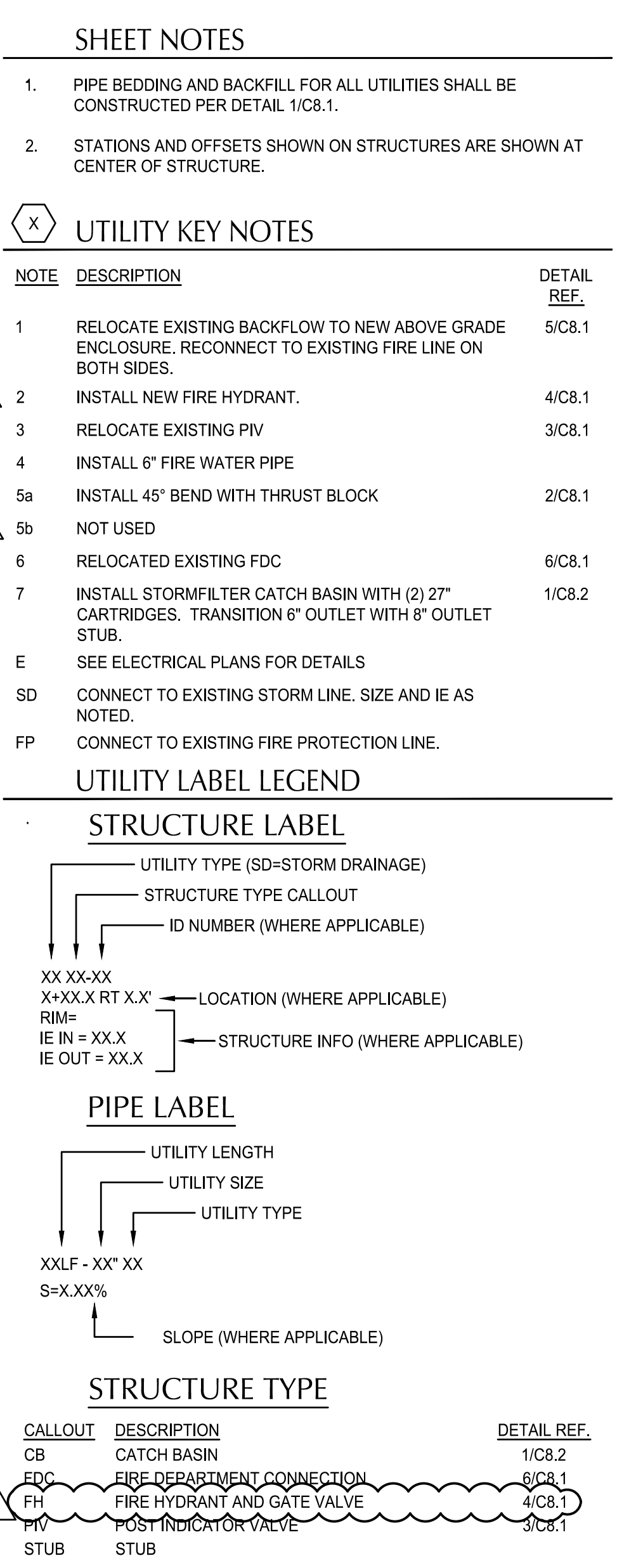
57420 OLD PORTLAND ROAD, COLUMBIA COUNTY, OREGON 97053

SCAPPOOSE BAY MARINE PARK
MARINA IMPROVEMENTS PROJECT UPLAND PHASE 1

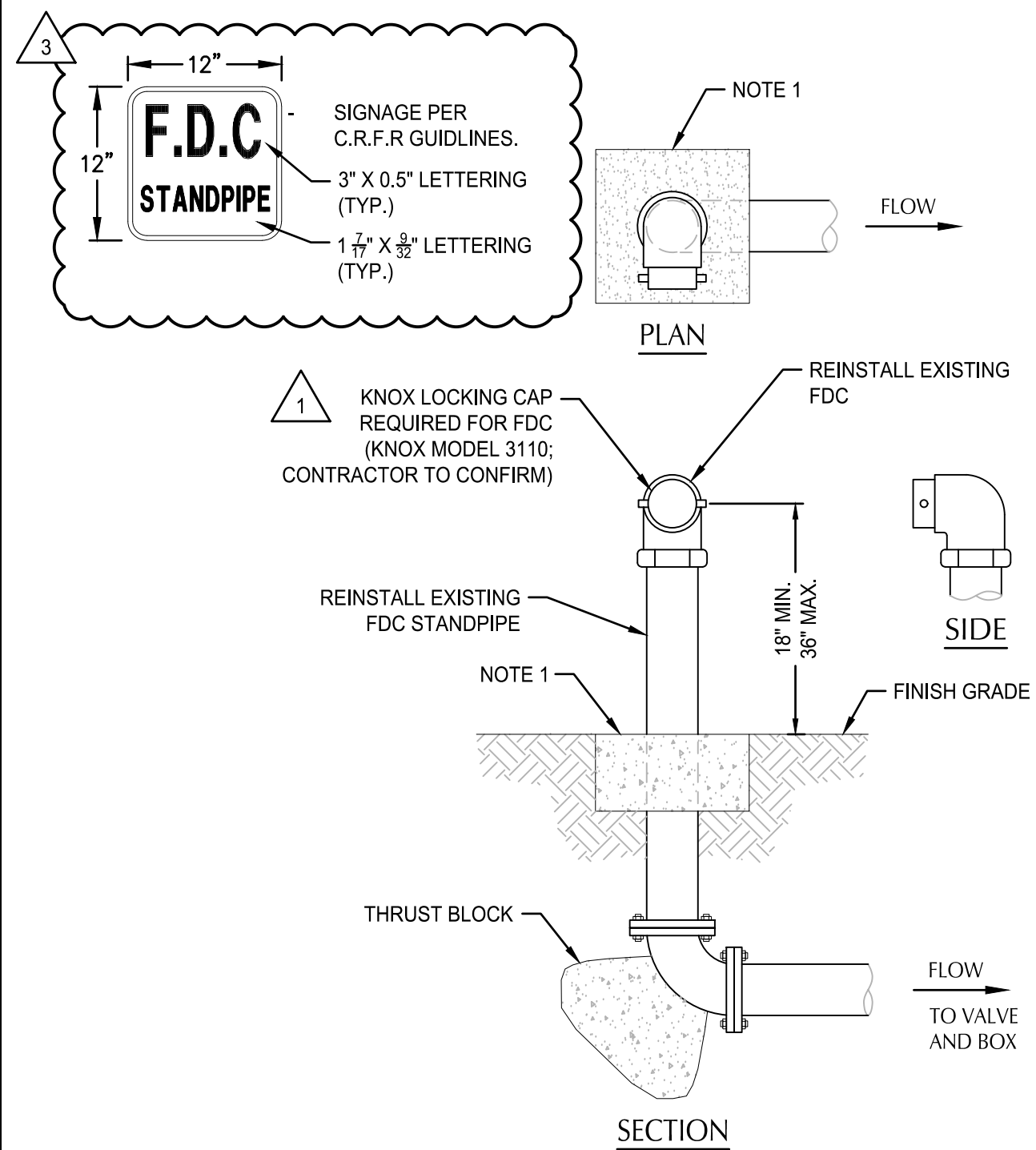
UPLAND SITE PLAN

SHEET	8	OF	23
RECORD NO.	2000399		

C3.1



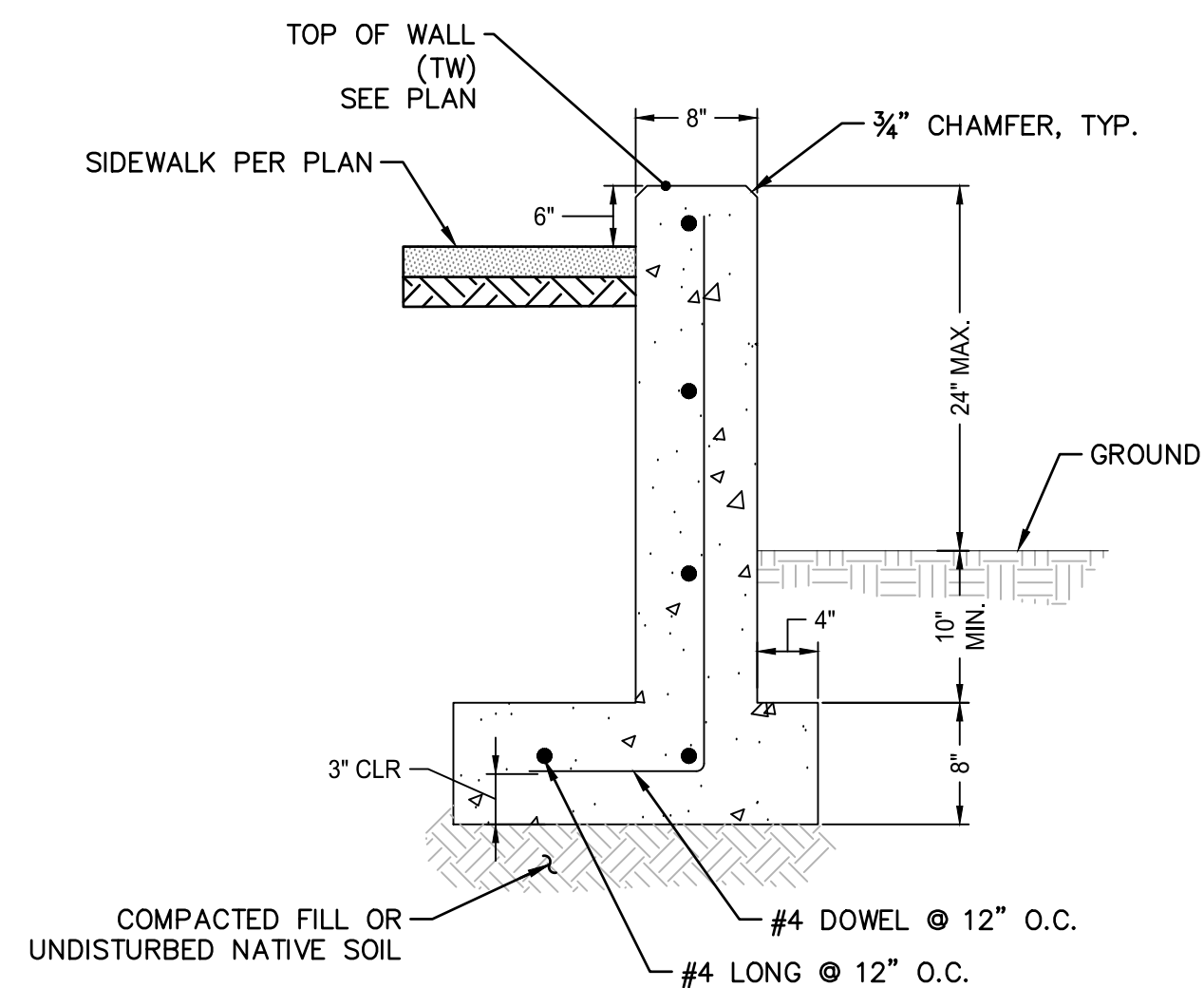
					 <p>111 SW Fifth Ave., Suite 2600 Portland, OR 97204 O: 503.542.3860 F: 503.274.4681 www.kpff.com</p>		JOB No.: 2000399	57420 OLD PORTLAND ROAD, COLUMBIA COUNTY, OREGON 97053	SHEET NO.
							DESIGNED BY: IF	SCAPPOOSE BAY MARINE PARK MARINA IMPROVEMENTS PROJECT UPLAND PHASE 1	
							DRAWN BY: CK		
							CHECKED BY: JZ		
3	7/30/2024	BID ADDENDUM 2					PLOT DATE: 8/1/24 10:07am		
2	7/11/2024	BID SET	PLOTTED BY: hjames						
1	7/09/2024	CITY OF SCAPPOOSE - FINAL PLAN REVIEW COMMENTS	DWG NAME: 0399-C5.0\UTILITY PLAN.dwg						
REVISION	DATE	DESCRIPTION	TAB NAME: C5.0						



- NOTES:**
1. CONCRETE ANCHOR PAD TO BE 12"x12"x6" THICK, UNLESS NOTED OTHERWISE. ELIMINATE IF INSTALLED IN CONCRETE PAVED AREA.
 2. USE FLANGE OR THREADED FITTINGS.
 3. CONTRACTOR SHALL PROVIDE SINGLE CHECK VALVE AND BALL DRIP VALVE IN ACCESSIBLE LOCATION INSIDE DDCV VAULT. COORDINATE WITH PLUMBING.

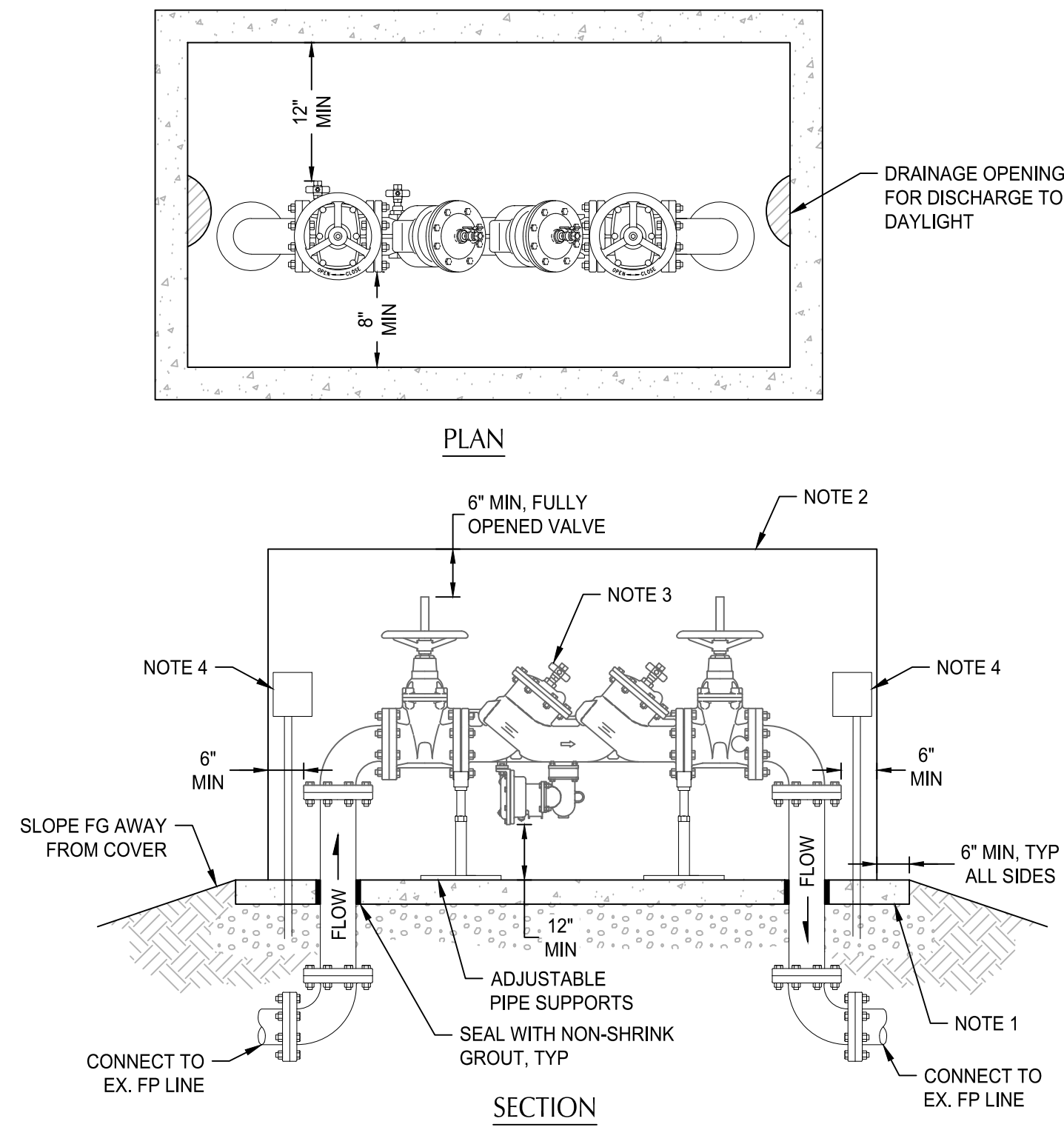
FIRE DEPARTMENT CONNECTION (FDC) SINGLE PORT

SCALE: NTS



CURB WALL

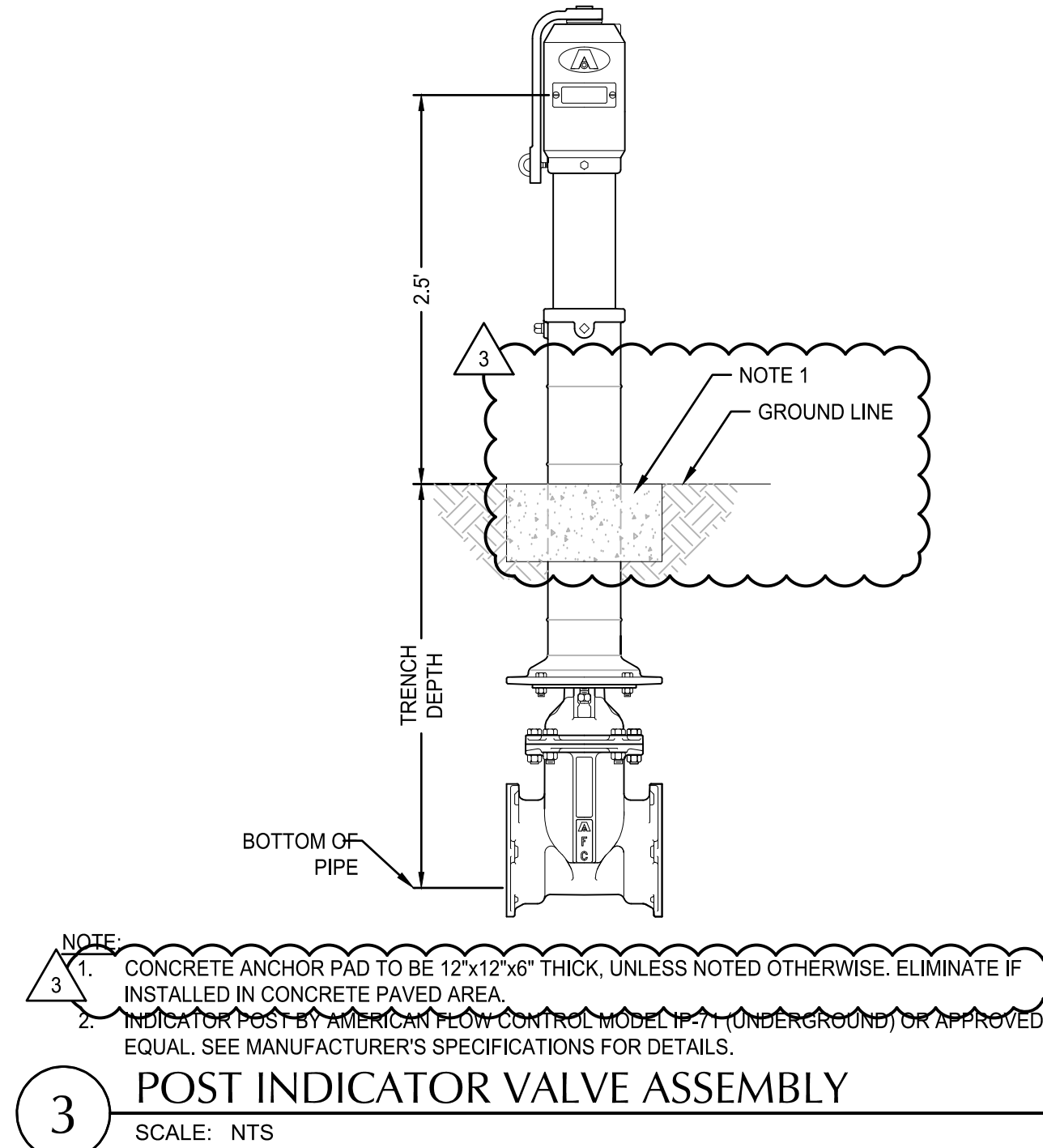
SCALE: NTS



- NOTES:**
1. CONCRETE SLAB: 4" MIN THICKNESS ON 6" OF 3/4"-0" COMPACTED AGGREGATE BASE. CONCRETE SHALL BE 3000 PSI MIN. MOUNT ENCLOSURE PER MANUFACTURER'S RECOMMENDATIONS.
 2. MOUNT DOUBLE CHECK DETECTOR VALVE (DCDV) ABOVE GROUND IN HEATED, INSULATED, AND PROTECTIVE ENCLOSURE (HOT BOX OR SIMILAR). CONTRACTOR TO CONFIRM ENCLOSURE CAN HOUSE THE ACTUAL CDDV DEVICE SELECTED PRIOR TO ORDERING.
 3. RELOCATE EXISTING 6" DCDV. ALL EXPOSED PIPE AND FITTINGS SHALL BE DUCTILE IRON, C900 OR 316 STAINLESS STEEL. CONTRACTOR SHALL NOTIFY ENGINEER IF EXISTING VALVE DOES NOT MEET THESE REQUIREMENTS.
 4. ENCLOSURE SHALL INCLUDE HEATING UNITS. PROVIDE ELECTRICAL RECEPTACLES FOR 60W POWER SOURCE. RECEPTACLE SHALL BE MOUNTED TO MEET ALL RELEVANT CODES FOR ELECTRICAL EQUIPMENT AND INSTALLATION. COORDINATE WITH ELECTRICAL TO PROVIDE ELECTRICAL SERVICE TO THE ENCLOSURE.
 5. DESIGNED HEATING TO MAINTAIN A MINIMUM AMBIENT TEMPERATURE OF 40°F WITH AN OUTSIDE TEMPERATURE OF -10°F AND WIND SPEED OF 20MPH.
 6. CLEARANCES SHOWN ARE MINIMUM BASED ON A HINGED ACCESS OR REMOVABLE ENCLOSURE.

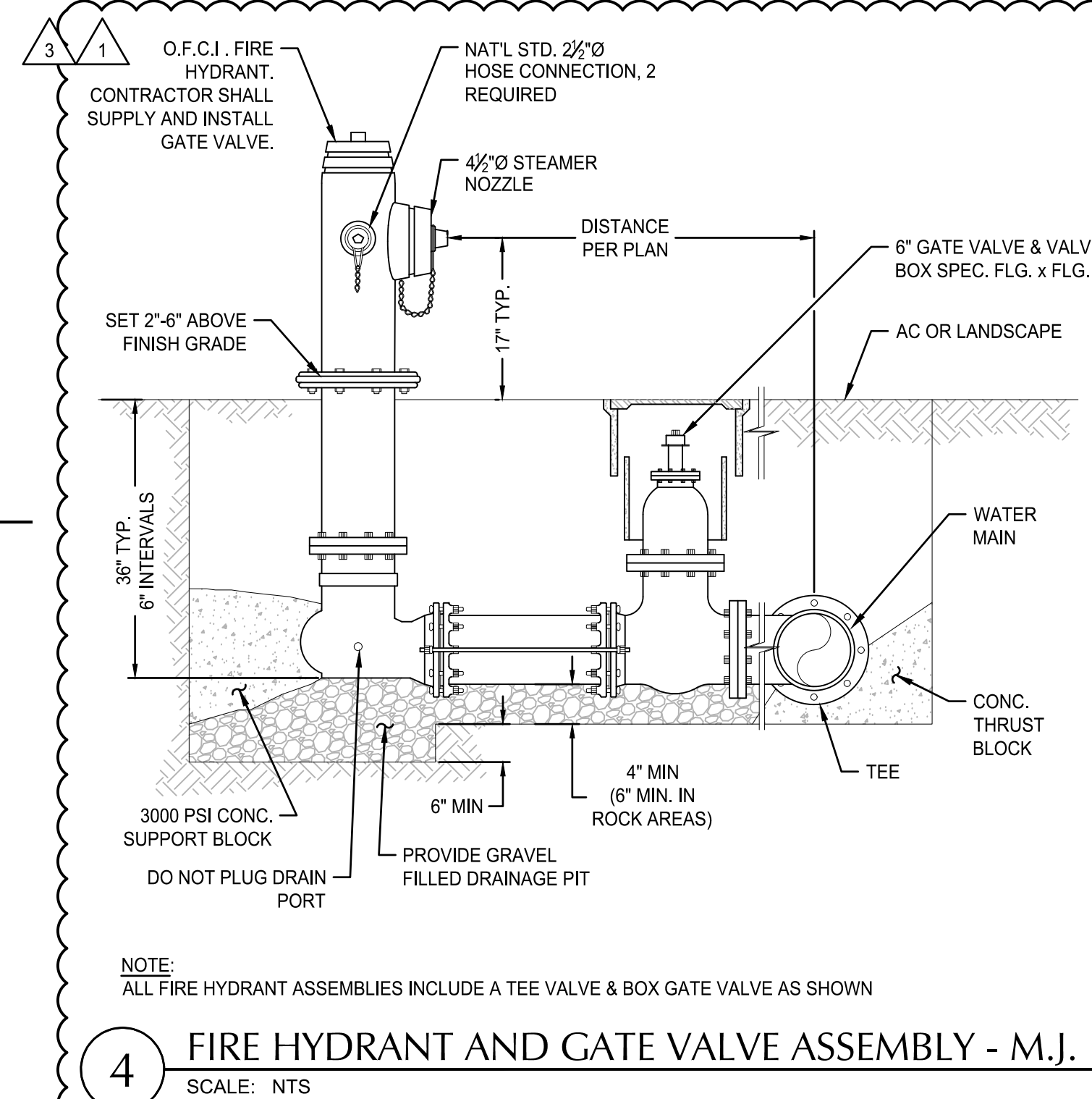
DOUBLE CHECK DETECTOR VALVE

SCALE: NTS



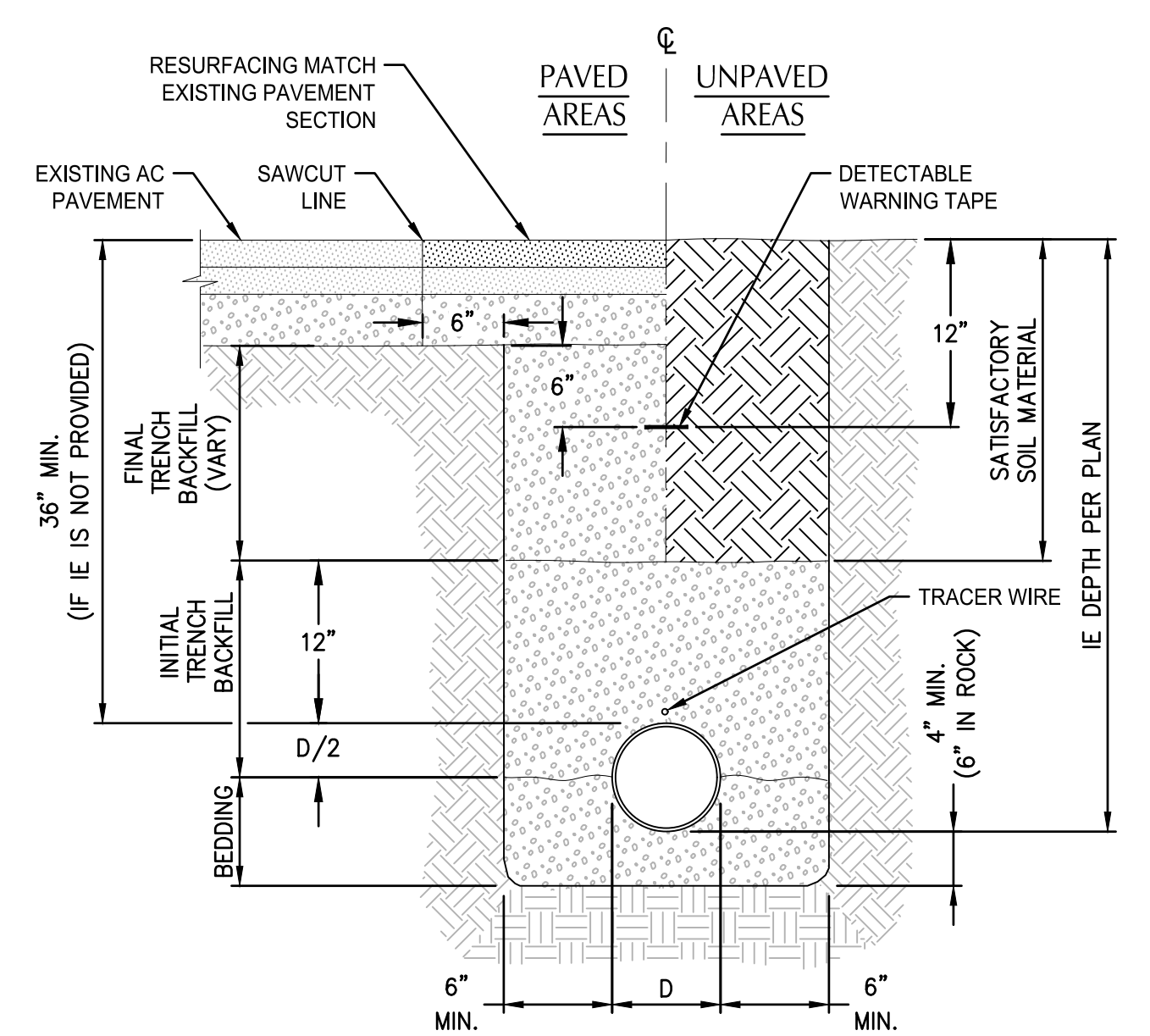
POST INDICATOR VALVE ASSEMBLY

SCALE: NTS



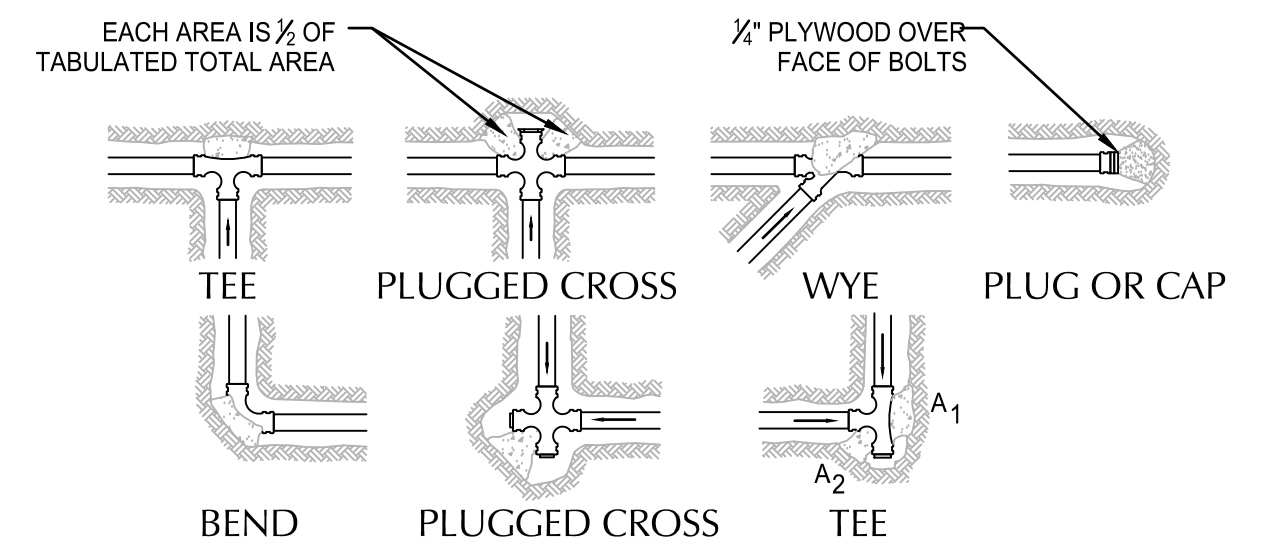
FIRE HYDRANT AND GATE VALVE ASSEMBLY - M.J.

SCALE: NTS



TYPICAL PIPE BEDDING AND BACKFILL

SCALE: NTS



1. CONCRETE THRUST BLOCKING TO BE POURED AGAINST UNDISTURBED EARTH.
2. KEEP CONCRETE CLEAR OF JOINT AND ACCESSORIES.
3. THE REQUIRED THRUST BEARING AREAS FOR SPECIAL CONNECTIONS ARE SHOWN ENCIRCLED ON THE PLAN; e.g. 15 INDICATES 15 SQUARE FEET BEARING AREA REQUIRED.
4. IF NOT SHOWN ON PLANS REQUIRED BEARING AREAS AT FITTING SHALL BE AS INDICATED BELOW, ADJUST IF NECESSARY, TO CONFORM TO THE TEST PRESSURE(S) AND ALLOWABLE SOIL BEARING STRESS (ES) STATED IN THE SPECIAL SPECIFICATIONS.
5. BEARING AREAS AND SPECIAL BLOCKING DETAILS SHOWN ON PLANS TAKE PRECEDENCE OVER BEARING AREAS AND BLOCKING DETAILS SHOWN ON THIS STANDARD DETAIL.

BEARING AREA OF THRUST BLOCK IN SQUARE FOOT

			TEE PLUGGED ON RUN				
FITTING SIZE	TEE, WYE, PLUG, OR CAP	90° BEND PLUGGED CROSS	A1	A2	45° BEND	22½° BEND	1½° BEND
4	1.0	1.4	1.9	1.4	1.0		
6	2.1	3.0	4.3	3.0	1.6	1.0	
8	3.8	5.3	7.6	5.4	2.9	1.5	1.0
10	5.9	8.4	11.8	8.4	4.6	2.4	1.2

NOTE:
ABOVE BEARING AREAS BASED ON TEST PRESSURE OF 150 p.s.i. AND AN ALLOWABLE SOIL BEARING STRESS OF 2000 p.s.i.. TO COMPUTE BEARING AREAS FOR DIFFERENT TEST PRESSURE AND SOIL BEARING STRESSES, USE THE FOLLOWING EQUATION: BEARING AREA = (TEST PRESSURE/150)X(2000/ SOIL BEARING STRESS)X(TABLE VALUE).

THRUST BLOCK

SCALE: NTS

3	7/30/2024	BID ADDENDUM 2	
2	7/11/2024	BID SET	
1	7/09/2024	CITY OF SCAPPOOSE - FINAL PLAN REVIEW COMMENTS	
REVISION	DATE	DESCRIPTION	BY



1 TYPICAL CONCRETE RETAINING WALL
1"=1'-0"

Scappoose Bay Marine Park
Marina Improvements Project - Phase 1
Addenda 1 and 2 Questions and Answers

Number	Date Asked	Question:	Response:
1	7/15/2024	Could I please get an engineer's estimate or cost range for this Port of Columbia City project, if one is available?	\$740,000
2	7/24/2024	As we discussed yesterday, the Price Schedule-Bid Sheet and the Bid Items in 01 22 50 do not match. 01 22 50 Bid Items had 26 items and the Bid Sheet has 32. Also, there are items in 01 22 50 that are not on the Bid Sheet. Items like the FDC, Double-Check, OFCI Fire Hydrant and the piping are not included in either the Bid Sheet or the Bid Items.	Bid schedule and 01 22 50 have been updated to match. New line item #29 now covers missing items.
3	7/24/2024	You stated that you were going to issue an addendum next week, but I ask that you issue a revised Bid Sheet and 02 22 50 Bid Items sooner. I have setup my Excel estimate sheet based on the Price Schedule-Bid Sheet and I'm concerned that your changes will have a major impact on my (and others) estimate layout. I don't want to make a mistake on bid day.	Addendum 1 sent out 7.26.24
4	7/26/2024	Please confirm the location of the power pole's guy wire. Specifically, is it located within the sidewalk, retaining wall, or below the retaining wall?	The guy wire is located within the sidewalk
5	7/26/2024	Is there anywhere on site for excess excavation material? If so, what quantity?	No.
6	7/26/2024	Please confirm bid item measurement and payment on the following items: A11 Bollards, A13 Aggregate Base 8-inch Thick, A19 Concrete Pavement, A20 Vehicular Concrete, A31 Recast Concrete Wheel Stop, A32 Reinstall Flagpole.	See Addendum 1 sent out 7.26.24
7	7/26/2024	Please provide clarity on Pedestrian Guardrail that complies with building code. Specifically, the length of pickets and the gap between the bottom rail/top of retaining wall concrete. Is an elevation view available?	See updated Pedestrian Guardrail shown in Addendum 2
8	7/26/2024	Please confirm Owner Furnish/Contractor Install or reuse of existing on the following items: Pay station units and shelters, and Fire double check detector valve.	Existing pay station at approx. STA 12+70 to be salvaged and relocated. New pay station is O.F.C.I. and shall be installed in the North corner of the existing parking lot. Backflow valve shall be salvaged and reinstalled.
9	7/26/2024	Please confirm the location and need of the pay station during construction? Specifically, how close to power?	One pay station should be operational at all times. Contractor shall coordinate location with the Port during construction and provide temporary power to existing pay station.
10	7/26/2024	Who shall be responsible for third party testing (compaction, concrete strength, etc.)?	Contractor to provide.
11	7/26/2024	Please clarify trash enclosure walls; chain link fencing, steel structure with corrugated metal, CMU, etc.	See Addendum 2. Chain-link with privacy fencing.
12	7/30/2024	RFP includes a request for quals and approach but there is no scoring system included... Noted concern that if Port were to select someone that is not low bid, that contractors may have an argument for a protest... Is the intent to score the quals/approach?	The intent is to award the project to the lowest responsive and responsible bidder. Please see Instructions to Bidders, beginning on page 5 of 7, for a complete list of the evaluation criteria. Port model rules and applicable statutes include both responsiveness and responsibility of bidders.
13	7/30/2024	Discrepancy between the completion date and the amount of time being provided... Is there a concern about funding? Long lead items?	The June 2025 completion date is the deadline for the grant funding. The time being provided to construct is the Port's construction timeline. There are no known long lead time items.
14	7/30/2024	Will the Port hire the special inspectors or shall the contractor hire them? If the contractor shall hire them, what is the approved list?	Contractor to provide.
15	7/31/2024	Bid Item A13 Aggregate Base, 8-inch Thick appears to be payment for the aggregate base associated with the new asphalt and concrete paving. Is the additional aggregate base shown for the concrete walks, curbs, vehicular concrete, etc. incidental to those pay items?	Addendum 2 - Bid item A13 changed to "Aggregate Base". Aggregate base to be paid out per tn. Not incidental to other pay items.
16	7/31/2024	Note 14 of Sheet C3.0 calls to install a new pay station and I can't find any information regarding it. Is the Owner providing it? Can we get information on what is required?	New pay station is O.F.C.I.
17	7/31/2024	On sheet E3.0 Key note 3 calls for a new 100 amp meter main to be feed for nearby power pole. Key note 10 call for the underground service from the nearest power pole to be routed to existing light pole then routed to new meter main. do you have any drawings from the PUD on where/how the new service will be fed? why is the new underground service being routed to the existing light pole before going to the service?	There are pole-mount transformers on the South side of the parking lot serving overhead power to the parking lot lights and the marina. An additional overhead line would be tapped from the existing transformer, and transition from overhead to underground at the pole indicated by Keynote 10. The meter-pedestal added by Keynote 4 (not 3) was located from that discussion to limit underground work in that part of the parking lot and utilize existing infrastructure as much as possible.
18	7/31/2024	Please confirm that aggregate base is paid based on the actual tons required to be compacted and placed, not on a ton/CY basis.	Addendum 2 - Bid item A13 changed to "Aggregate Base". Aggregate base to be paid out per tn. Not incidental to other pay items.